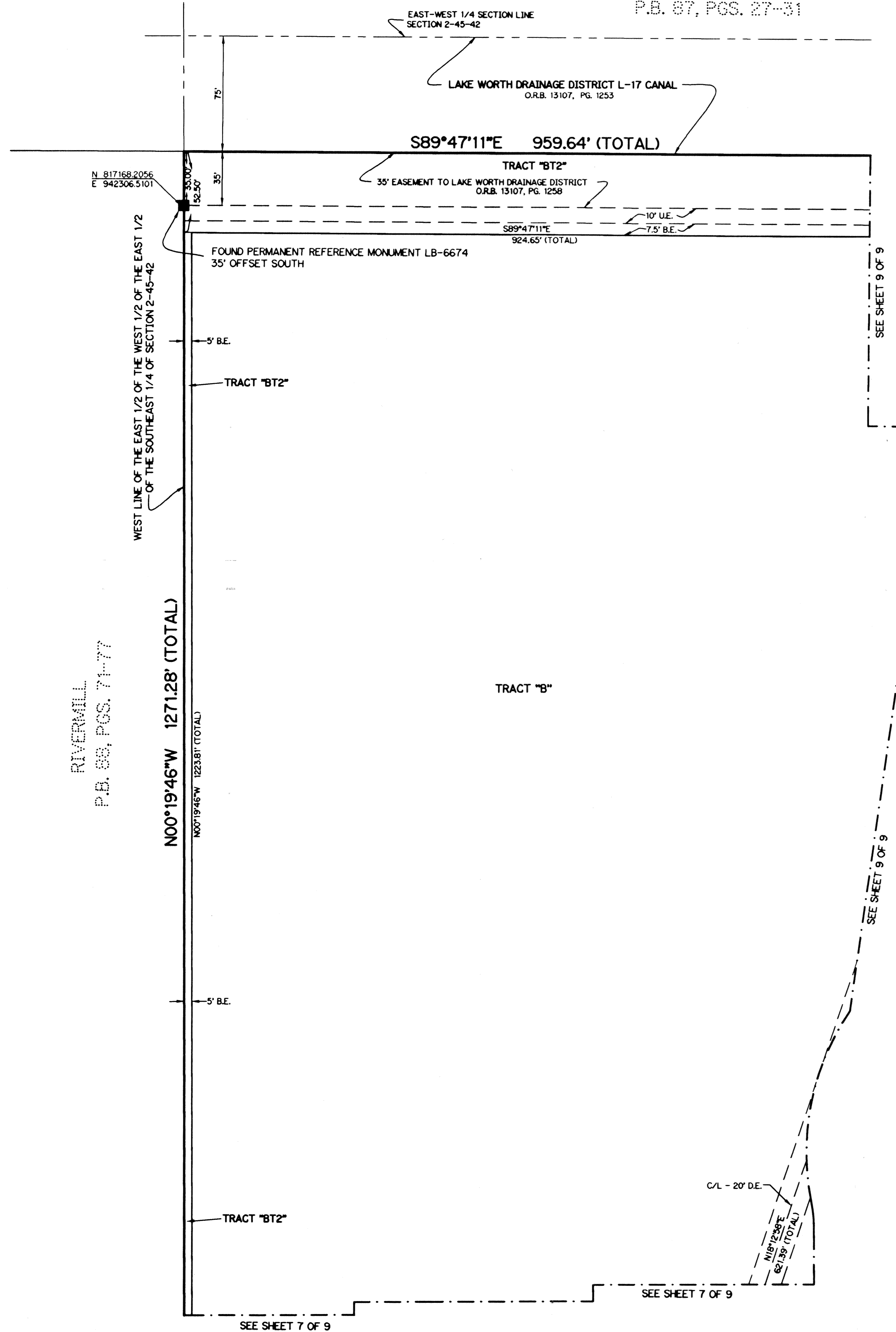


HYPOLUXO/HAVERHILL P.U.D. - PLAT ONE

PLANNED UNIT DEVELOPMENT
A PARCEL OF LAND LYING IN
SECTION 2, TOWNSHIP 45 SOUTH, RANGE 42 EAST,
PALM BEACH COUNTY, FLORIDA.
SHEET 8 OF 9 AUGUST, 2001

WINSTON TRAILS
P.B. 87, PGS. 27-31



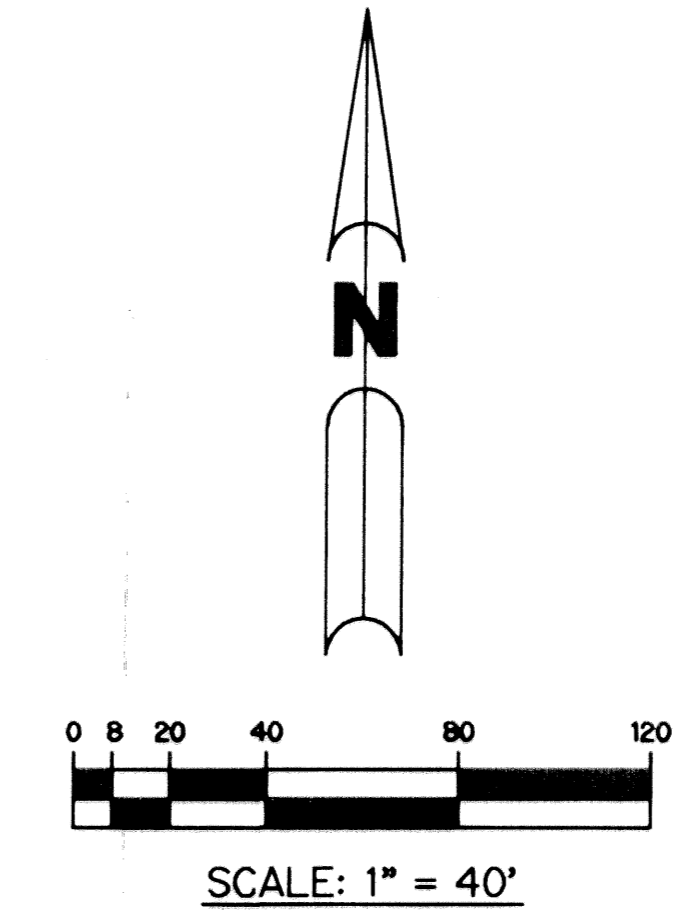
RIVERMILL
P.B. 88, PGS. 71-77

NOTE:

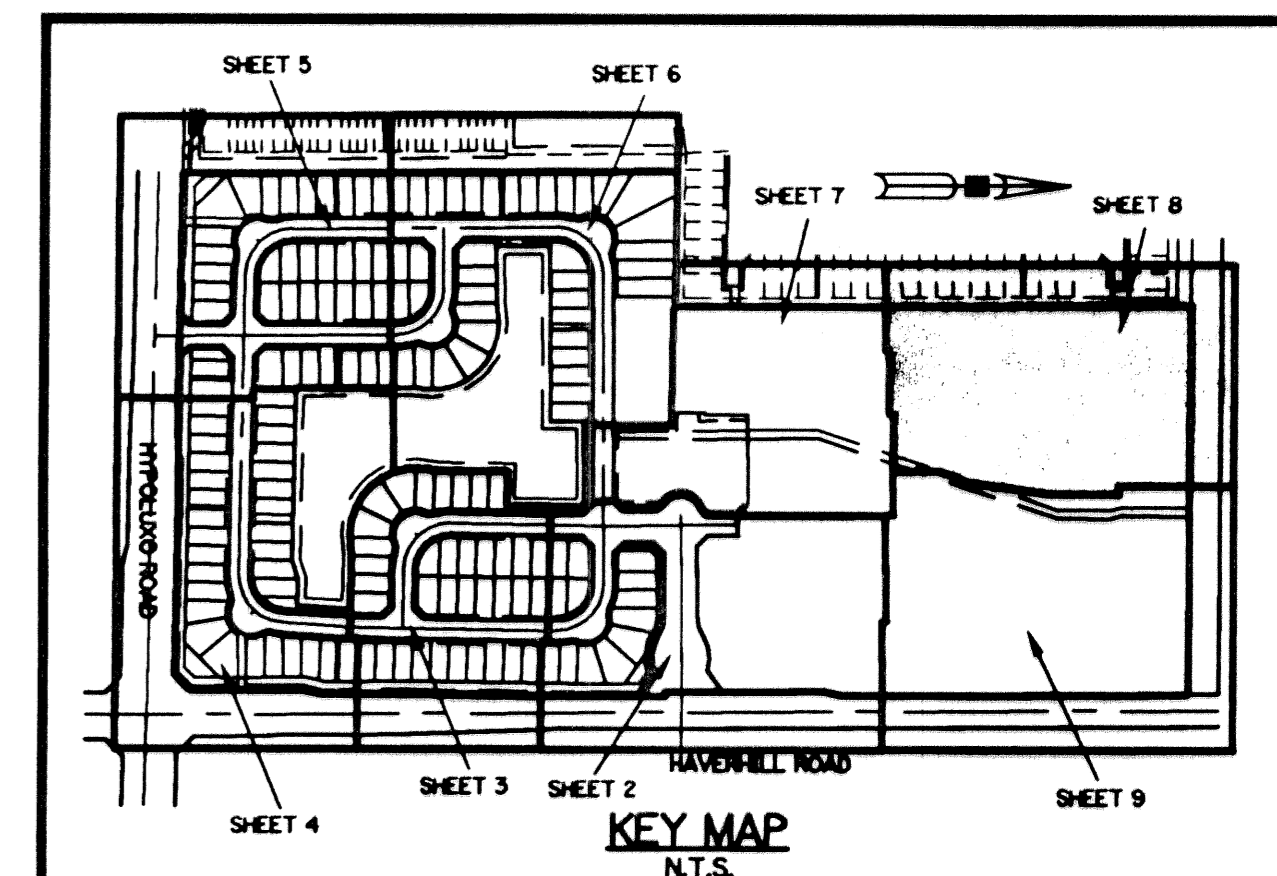
COORDINATES SHOWN ARE GRID COORDINATES
 DATUM = NAD 83 (1990 ADJUSTMENT)
 ZONE = FLORIDA EAST ZONE
 LINEAR UNIT = U.S. SURVEY FEET
 COORDINATE SYSTEM 1983 STATE PLANE
 TRANSVERSE MERCATOR PROJECTION
 ALL DISTANCES ARE GROUND
 SCALE FACTOR = 1.000034481
 NO ROTATION: PLAT BEARING = GRID BEARING

LEGEND:

- - SET PERMANENT REFERENCE MONUMENT, LB-6674
- - PERMANENT CONTROL POINT, LB-6674
- Δ - DELTA ANGLE
- B.E. - BUFFER EASEMENT
- C.L. - CENTERLINE
- C.B. - CHORD BEARING
- C.H. - CHORD LENGTH
- D.B. - DEED BOOK
- D.E. - DRAINAGE EASEMENT
- L. - ARC LENGTH
- L.A.E. - LIMITED ACCESS EASEMENT
- L.M.A.E. - LAKE MAINTENANCE ACCESS EASEMENT
- L.M.E. - LAKE MAINTENANCE EASEMENT
- L.W.D.D. - LAKE WORTH DRAINAGE DISTRICT
- N.R. - NOT RADIAL
- N.T.S. - NOT TO SCALE
- O.R.B. - OFFICIAL RECORD BOOK
- P.B. - PLAT BOOK
- PGS. - PAGES
- P.S.M. - PROFESSIONAL SURVEYOR AND MAPPER
- R. - RADIUS
- R/W - RIGHT-OF-WAY
- S.T. - SURVEY TIE
- U.E. - UTILITY EASEMENT
- O.E. - OVERHANG EASEMENT
- N 814602.8657 E 785753.1680 - DENOTES STATE PLANE COORDINATES



THIS INSTRUMENT PREPARED BY
 WILBUR F. DIVINE, P.S.M. 4190, STATE OF FLORIDA
 LAWSON, NOBLE AND WEBB, INC., LB-6674
 ENGINEERS PLANNERS SURVEYORS
 420 COLUMBIA DRIVE, SUITE 110
 WEST PALM BEACH, FLORIDA



SUBDIVISION: HYPOLUXO/HAVERHILL PUD
 BOOK 94 PAGE 38
 RECORD/ZONE B FLOOD/REG - 175B
 QUAD/PLAT 24 ZONING - PUD
 SE ZIP CODE 33463
 TAZ 424
 PUD NAME HYPOLUXO/HAVERHILL